

ET6



Doss Visual Solution srl

Via dell'Industria,57/A
25030 - Erbusco (BS)

Tel.: +39 0307703191 - fax +39 0307703286

www.doss.it - e-mail: doss@doss.it

Description

The device is composed of a 2D measuring unit and of a thickness measuring one. The units are framed in aluminium profiles and painted guards, RAL 7035 and the overall dimensions are: 420x990x2000(h) mm. The operator manually places the sample to measure on the motorized plate. While the sample is being moved towards the camera, the device will take a series of real thickness measures on the sample along a virtual line.

The camera (matrix 2000x2500px) together with the telecentric lens acquires the image without distortion on the 2D plane.

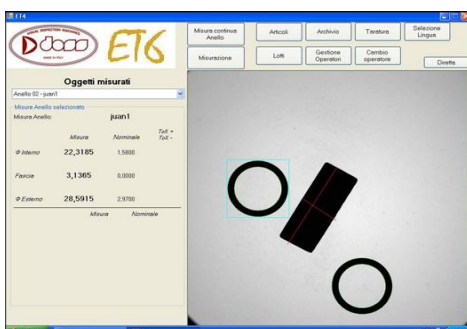
The data collected by the two units (dimensions on the plane, 2D and thickness) are transferred to the computer and can be accessed by the operator through the graphic interface. These data are saved in a database and are available for the operator at any time.

Type of check - Ring

- Min. and Max ID
- Min. and Max OD
- Max difference between the max and the min ID
- Min. Max. Chord
- Average ID
- Average OD
- Average Chord
- Multiple measurement (it allows to measure more parts within the framed field by comparing them with the set average tolerances)
- Thickness values obtained along the virtual line.

Type of check - Irregular shape/washers

- Four adjustable rulers (identified with the auto-learning) for the measurement of linear distances on the part's shape.
- Automatic definition of the measurement point (by means of a dedicated software) which allows obtaining orthogonal measurements (even of non parallel profiles).
- Partial curving rays, distance between the centers, ID.
- Part's data saving for following consecutive measurements without need to orient the part.
- Comparison with the tolerances (five positive and five negative (or at zero) with respect to the nominal value).
- Saving of the obtained values in a chart with CP and CPK calculation.
- Thickness values obtained along the virtual line.



Technical data sheet	ET6
Framed field:	130x130mm
Max. diameter measurable part:	124 mm
Min. diameter measurable part:	1 mm
Part's thickness:	0,1 - 9 mm
Thickness measure pitch	0,0,1 mm
Resolution Camera	5 Mpx
Resolution thickness measure	± 0,005 mm
Elaboration time 2D:	1 pc/sec.
Elaboration time Thickness:	24 sec
2D Measure repeatability	± 0,013 mm
2D Measure accuracy	± 0,027 mm
Noise level:	< 15 dB
Single-phase power supply:	230V - 50Hz
Use temperature:	+5°C to +40°C
Relative humidity:	max 80%
Electrical safety protection:	IP 44
Installed power supply:	0,5 kw
Average consumption:	200 w

